



YOUR SANCTUARY OF REFINED OPULENCE



Set Among Lush Verdure And The Quaint Allure Of Aldona

Nestled in the picturesque landscape of Aldona, North Goa, “Casa de Dolce Vita” rises as a beacon of refined opulence.

Embracing the esteemed heritage of Portuguese design, “Casa de Dolce Vita” celebrates impeccable artistry and unparalleled luxury.

The stylist interiors harmoniously blend with traditional elements, creating a haven of sophistication.

As you wander through its corridors and appreciate its architectural splendor, you are transported to a bygone era of regal elegance, seamlessly fused with contemporary comforts.

* An Artist's Impression

Casa
de
Dolce Vita
Aldona - Goa



* An Artist's Impression

Casa
de
Dolce Vita
Aldona - Goa



* An Artist's Impression



SHIMMERING
SWIMMING
POOL

* An Artist's Impression



POOLSIDE PAVILLION



* An Artist's Impression

DOUBLE HEIGHT
ENTRANCE FOYER



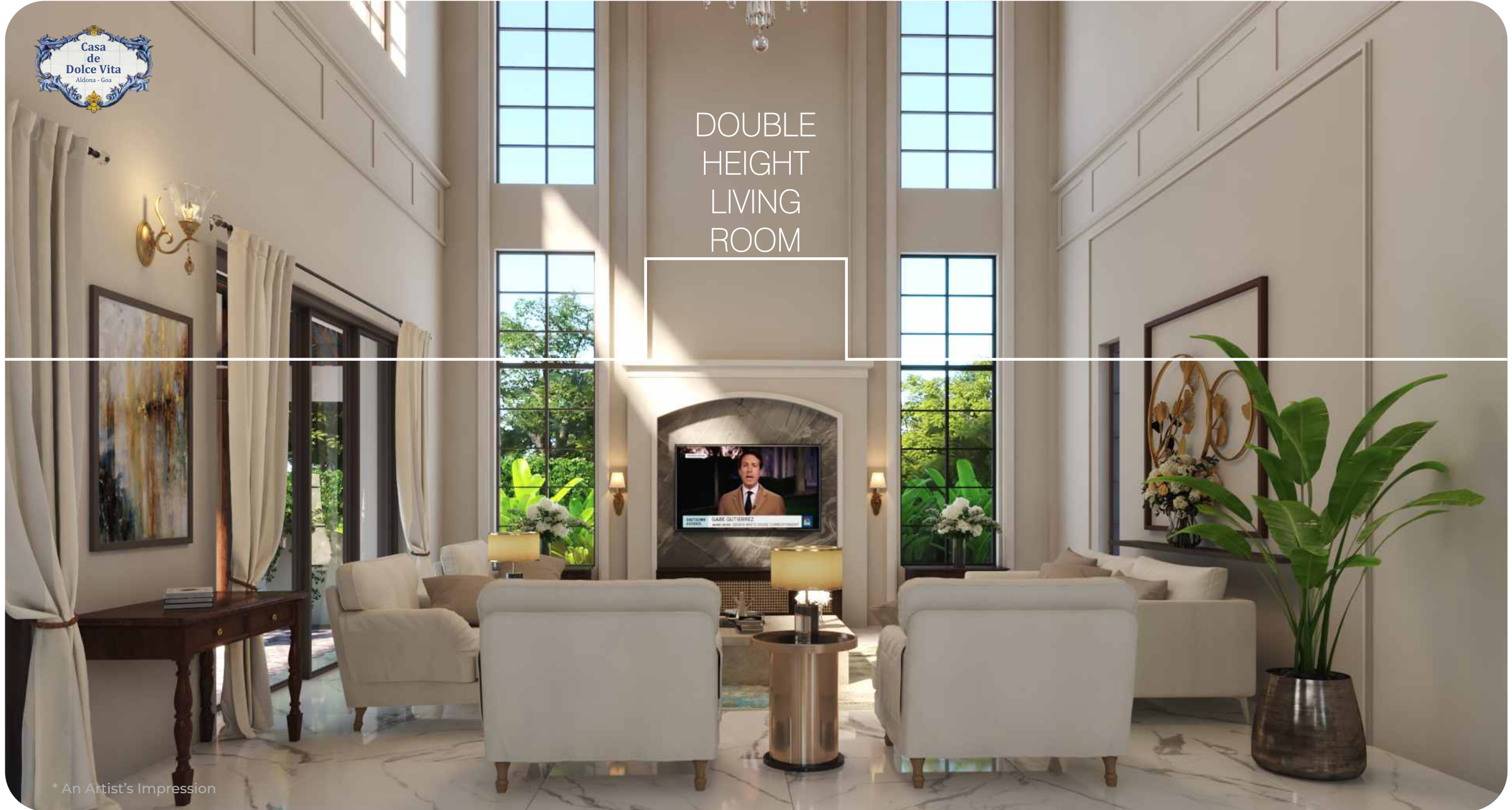
* An Artist's Impression



* An Artist's Impression



DOUBLE
HEIGHT
LIVING
ROOM



* An Artist's Impression



POOLSIDE
DINING
AREA

* An Artist's Impression

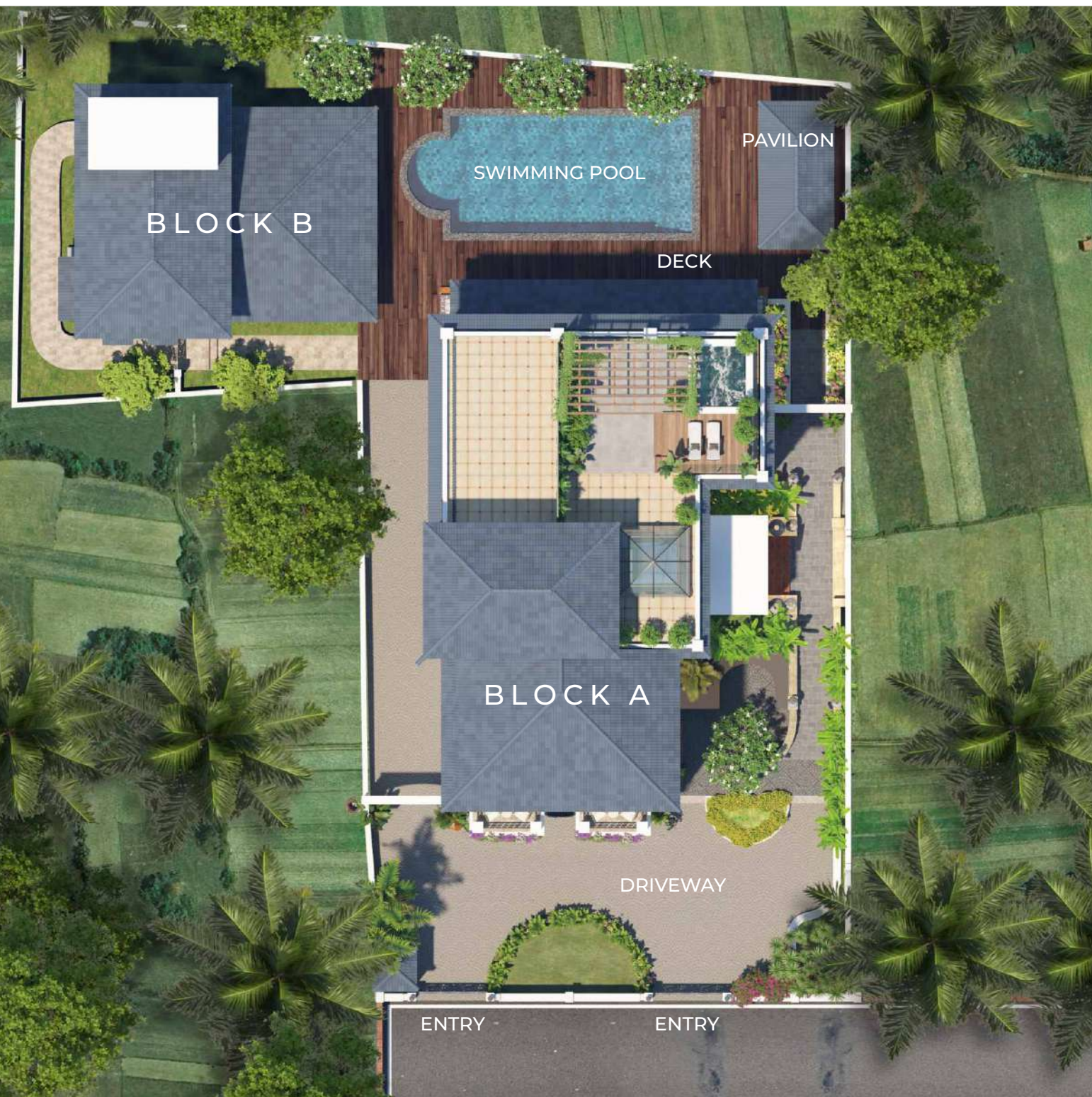


TRANQUIL
BEDROOMS

* An Artist's Impression



* An Artist's Impression

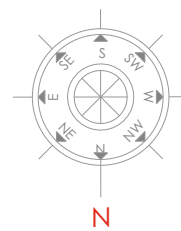


LOCATED
AMIDST
LUSH
GREENERY

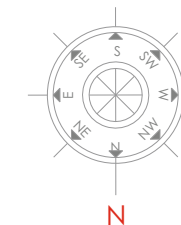
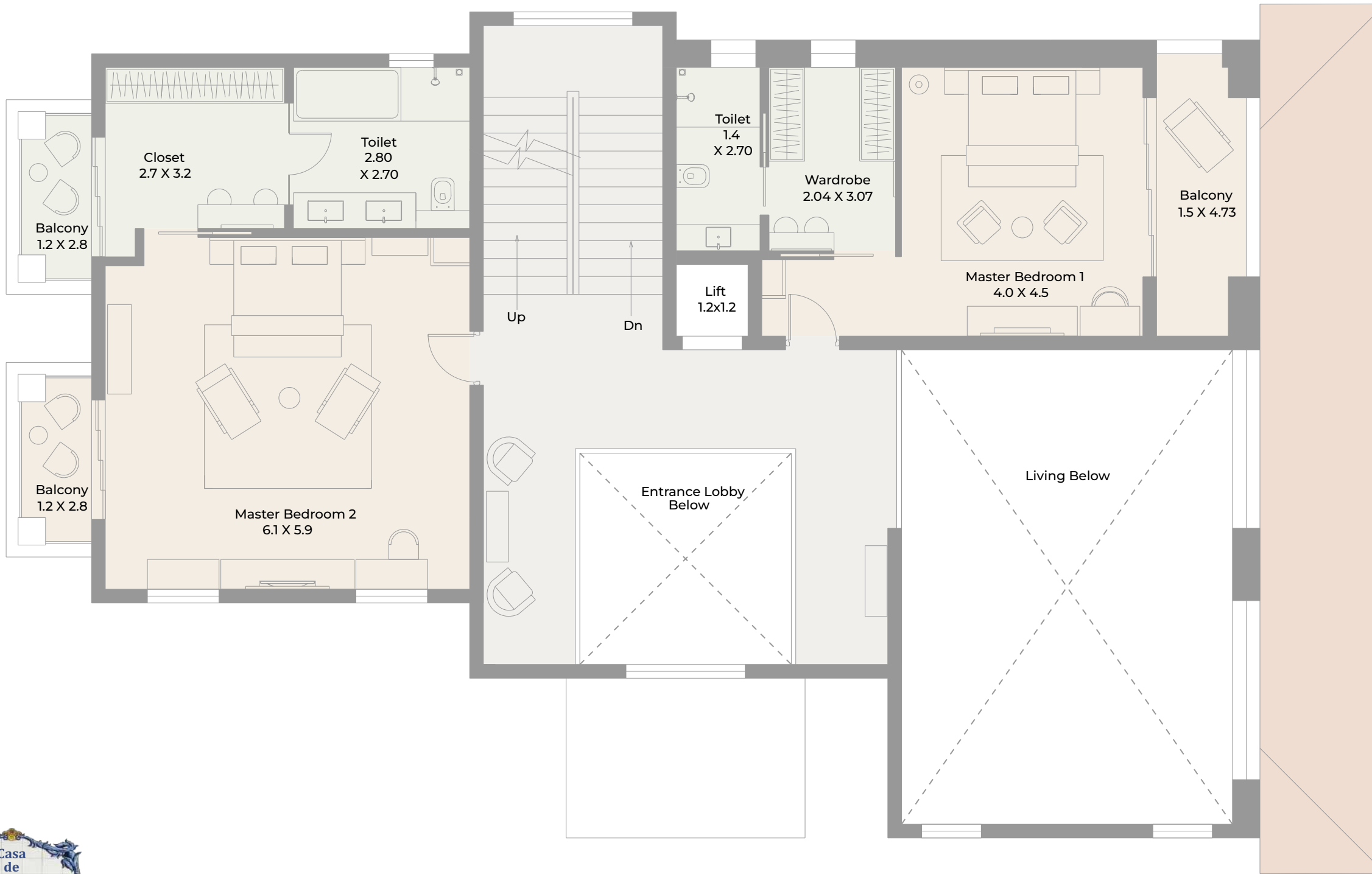


FULL SCHEME LAYOUT

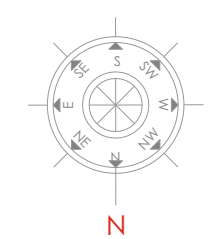
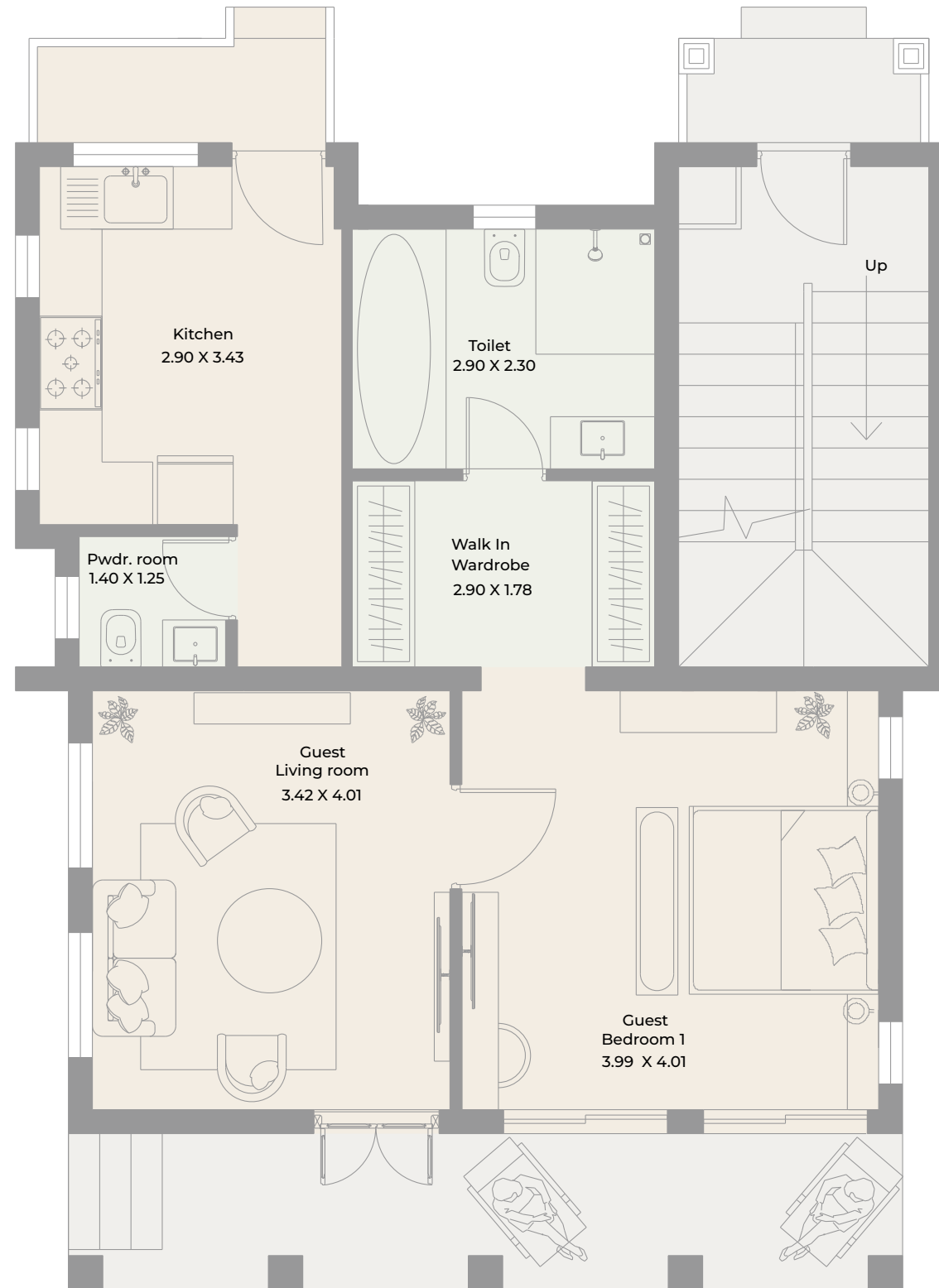
* An Artist's Impression



BLOCK A GROUND FLOOR PLAN

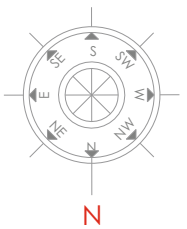
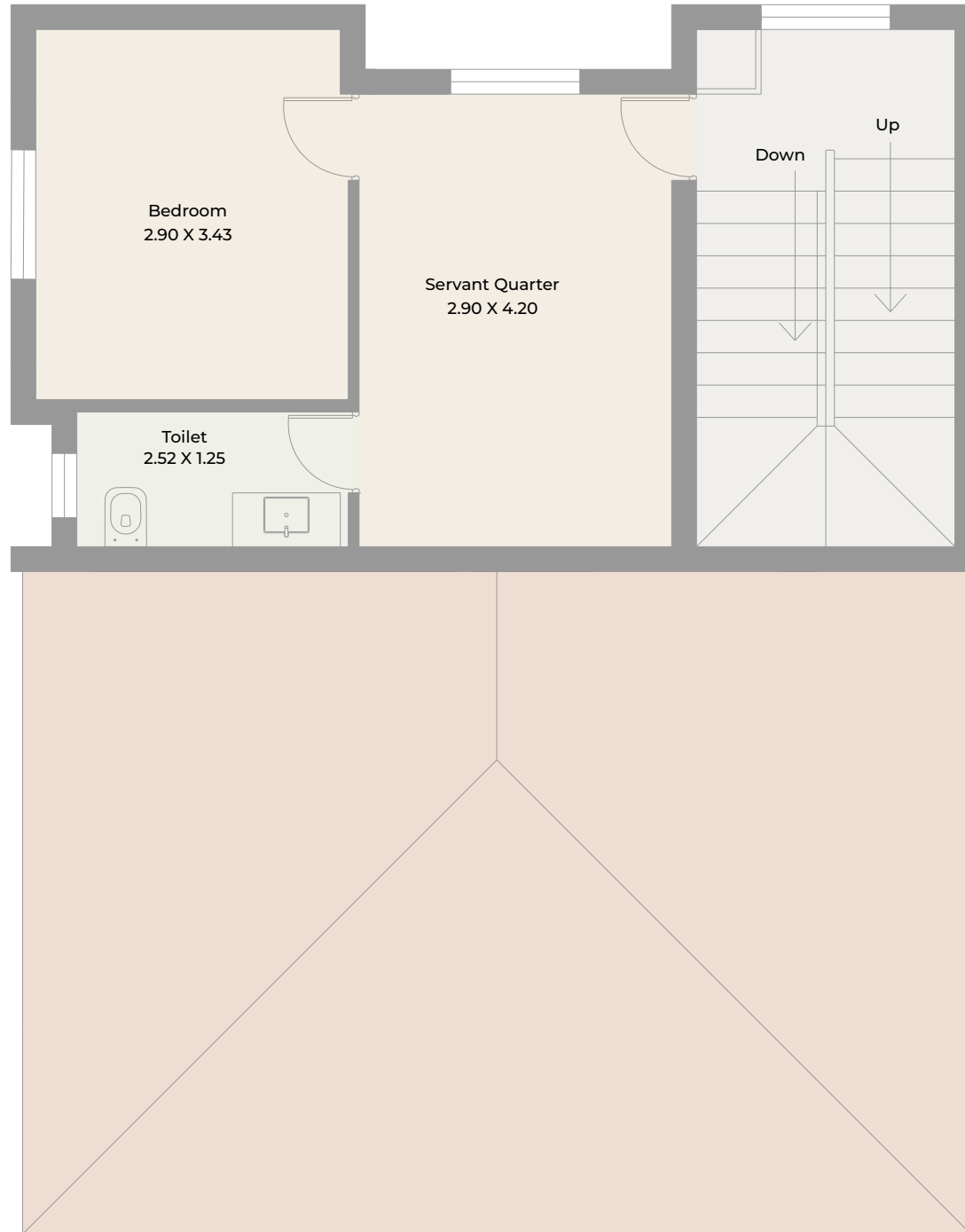


BLOCK A FIRST FLOOR PLAN



BLOCK - B
GROUND FLOOR PLAN





BLOCK - B
FIRST FLOOR PLAN

PROJECT AMENITIES

- | | |
|--------------------------------|--|
| Private Lift | Servant's quarter |
| EV charging points in Car park | Guest Room block |
| CCTV Surveillance cameras | Solar electricity connection for lift and full villa |
| WIFI Connectivity | |



PROJECT SPECIFICATIONS

Exterior

- WPC/Solid Wood Decking near pool
- Private Swimming Pool
- Jacuzzi on roof level
- Waterbody with Fountain
- Lawn and Landscaped Gardens
- Dedicated Parking area

Living/Dining/Bedroom

- Natural Stone/Wooden/Vitrified Tiles/Cement Tiles/Terrazzo designer Flooring
- Ceiling Lights and decorative lights as per design /selection
- Full Length Windows with Georgian Bars design, and Standout Balcony with designer railing
- Designer Handcrafted Furniture
- D'Decor or equivalent Fabrics and Curtains

Staircase

- Wooden/Natural Stone step as per design
- Designer Handrail of MS powder coated Balcony
- MS powder coated railing
- Natural Stone Flooring

Kitchen

- Concealed Lights and Fittings
- Modular Kitchen with Chimney
- Dado Backsplash of Vitrified/Concrete Designer Tiles

Bathrooms

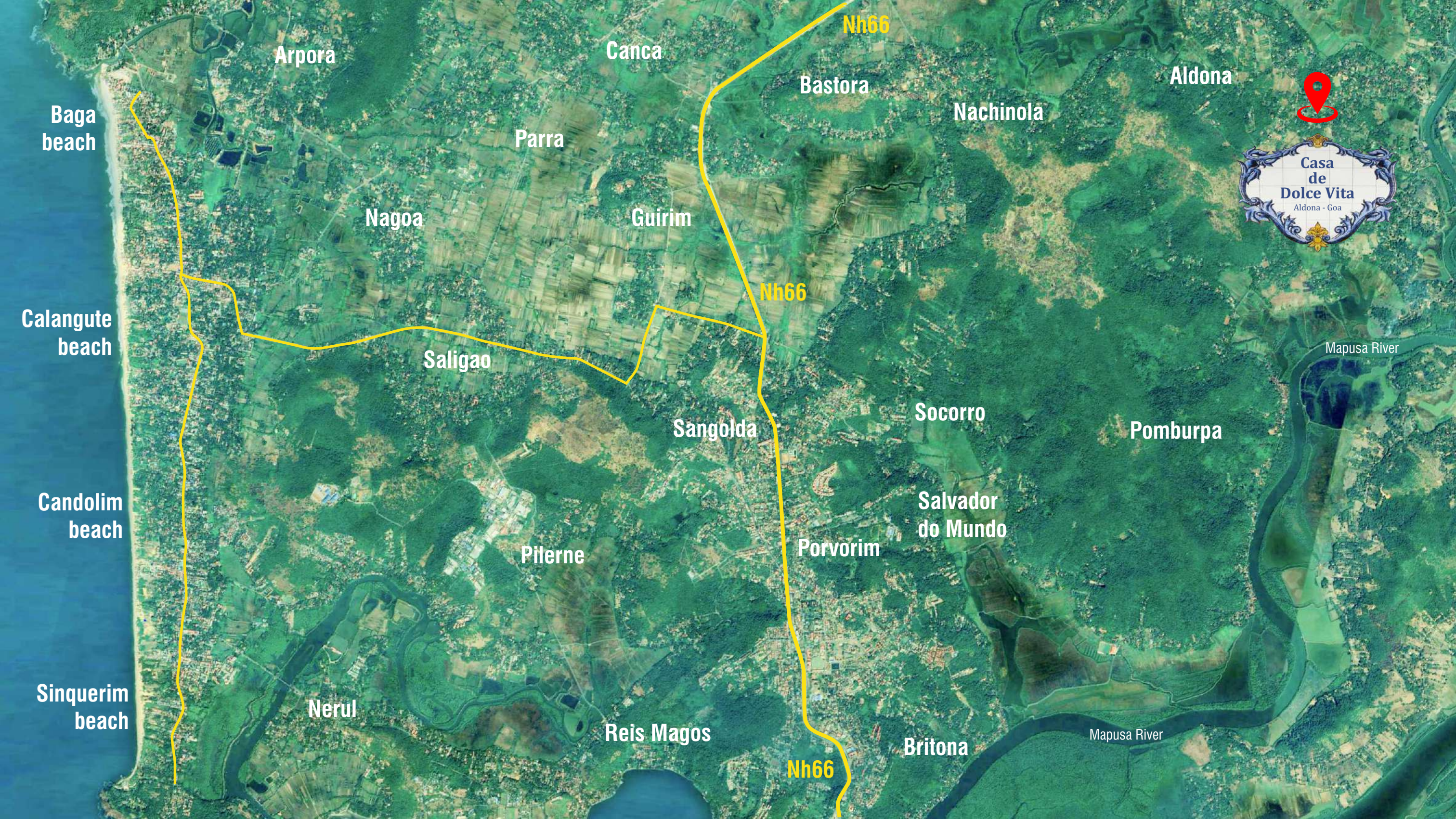
- Astral/Ashirwad or equivalent UPVC/CPVC pipes for Water Supply System
- Finolex or equivalent Make Underground Drain Pipes
- Water heating Solution for Entire Villa
- Laufan/Gessi/Roca/Toto/Kohler/Jaquar make sanitaryware and faucets
- Glass partitions for showers
- Dedicated bathtub for Master bedroom

Pools

- Good quality imported tiles,
- Pool deck of WPC/Solid wood
- Led Underwater Lighting
- Water body with Fountain

Pavilion Block

- Dedicated Lounge Area
- Private Bedroom and Balcony on first floor
- Lawn and Landscaped Gardens



Arpora

Canca

Nh66

Bastora

Aldona

Baga beach

Nachinola

Parra



Nagoa

Guirim

Nh66

Calangute beach

Saligao

Mapusa River

Sangolda

Socorro

Pomburpa

Candolim beach

Salvador do Mundo

Pilerne

Porvorim

Sinquerim beach

Nerul

Reis Magos

Nh66

Britona

Mapusa River



FOR BOOKINGS & ENQUIRIES PLEASE CONTACT



Flat no .IMF-02 , white castle building , Ximer, Mapusa, Bardez - Goa

 Anup - +91 8625834291 | Manfred - +91 9049986949

Email - manupestatespvtltd@gmail.com

Disclaimer:

All images shown are artist impressions and stock images. The printed material does not constitute a contract/ offer of any type between the promoter/builder and the recipient of this brochure. The designs, dimensions, cost, facilities, plans, accessories, paintings, items, electronic goods, additional fixtures/ fittings, specifications, shades, sizes, colour of the finishing materials, amenities and other details shown in the images are only indicative in nature and are only for the purpose of illustrating/ indicating a possible layout and do not form part of the standard specifications/ amenities/ services to be provided.